

SPRAY PROGRAMME: STONE FRUIT



1st Application:

HALF INCH GREEN: When one half-inch of green tissue is projecting from buds.

Solution = 1tsp / 1l water



2nd Application:

BLOOM: First opening of blossoms until petal-fall stage. Do not use insecticides during this time.

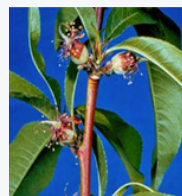
Solution = 1tsp / 1l water



3rd Application:

PETAL FALL: Three-fourths of petals on the blossom have fallen.

Solution = 1tsp / 1l water



4th Application:

SHUCK-SPLIT: Outer shuck has split and base of fruit is exposed.

Solution = 1tsp / 1l water



5th Application:

FRUIT SET: Shuck has fallen and only the small developing fruit remains.

Solution = 1tsp / 1l water

NOTES:

*STONE FRUIT:

STONE FRUIT ARE FRUITS THAT HAVE A THIN SKIN AND A SEED / "STONE" IN THE CENTRE.

PEACHES, PLUMS, APRICOTS, DATES, MANGOES, COCONUTS, AND CHERRIES FALL INTO THE STONE FRUIT CATEGORY.

*AS LONG AS FOLIAGE IS GREEN IT WILL ABSORB NUTRIENTS APPLIED BY FOLIAR SPRAY.

